



## Overview

A 100mm and 150mm centre glazed commercial framing system ideally suited for shopping centres, offices, showrooms and commercial buildings. Can be either single or double glazed\*. Glass can be fitted to the frame using external captive and internal roll-in glazing wedges or roll-in wedges on both sides. The use of an external captive glazing wedge and an internal roll-in wedge prevents vandalism in ground floor applications.

There are a number of hinged doors available which can also be set up as sliding doors. As sliding doors they can either be top hung (in order to provide as level transition through the entrance as possible) or bottom rolling track mounted.

There are a number of awning/casement windows that can be incorporated into the 100mm frame and the sash options include flat and bevelled faces.

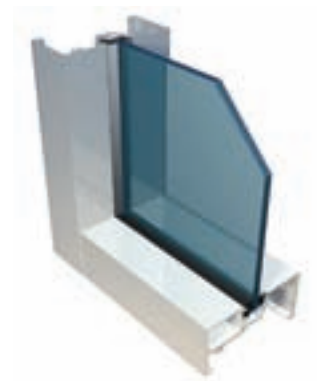
Two sliding windows systems and a double hung system have been designed to be incorporated into the 100mm frame.

A unique 100mm three-way coupling post is available to provide a seamless connection at 90° and/or 180°. Infill glazing adaptors permit both single glazing and double glazed IGU's to be recessed into the post, thereby avoiding the bulk associated with unnecessary additional jambs. The coupling post can also be used to couple together Lidco's vast range of 100mm systems including windows and doors.

A number of Lidco bifold and sliding door systems and can be coupled to this system.

Adjustable Klimat Lanai Louvres™ can be easily fitted to this system.

Sub-sill, sub-head and sub-jamb options are available to aid on-site installation.



Maximum Glass Thickness
≤25mm IGU

## Features

- Single glazing options range from 5mm to 10.38mm and the double glazed option is designed to accept a 25mm IGU
- In high wind load areas added structural strength is achieved with the use of heavy duty mullions and there is a choice of transoms for fabricators to choose from
- All double glazed fixed frame sections can take up to 32mm IGU glass thickness utilising the wet glaze (silicone) technique
- The 27mm deep glazing pocket is designed to provide sufficient depth to allow the glass to be inserted easily without damage
- Lidco Emporia™ Commercial Doors (716 and 717 Systems) can be incorporated into the 710 System both in hinged and sliding configurations
- The following Lidco awning/casement sashes can be incorporated into the 100mm frame:
  - DuoTherm™ awning flush sash from the 373 System
  - Thermaview™ awning overlap sash from the 413 system (flat face and beveled sashes available\*\*)
- The Pinnacle™ stacking door can be coupled to the 150mm frame
- The following Lidco window systems can be incorporated into the 100mm frame:
  - Architectural sliding window - 772 System
  - Pinnacle™ sliding window - 746 System
  - Pinnacle™ double hung window - 748 System
  - Adjustable Klimat Lanai Louvres™ can be fitted to the reveals of both 100mm and 150mm frames using top and bottom weather bars
- The following Lidco bifold doors can be coupled to the 100mm frame:
  - Pinnacle™ bifold door - 744 System
  - Lifestyle™ bifold door - 615 System
- The following Lidco sliding doors can be coupled to the 100mm frame:
  - Lifestyle™ sliding door - 130 System
  - Alto™ sliding door - 360 System
  - Pinnacle™ sliding door - 735 System

\*150mm double glazed frame subject to lead times  
\*\*Single glazed only

## How to Specify

- Aluminium frames to be manufactured using Lidco 710 System: Emporia™ Centre Glazed Commercial Framing
- Selected framing to be engineered, manufactured and installed in accordance with:
  - AS 2047-2048 (Windows in Buildings)
  - AS/NZS 1170 (Loading Code)
  - AS/NZS 1664 (Aluminium Structures Code)
- Selected glazing to be in line with performance requirements as set out in AS 1288 (Glass in Buildings)
- Size limitations are governed by design intent, glass selection and local wind load and deflection requirements



For any specification assistance please call to speak to one of our friendly and knowledgeable technical sales team on 1300 663 848 or email [techsupport@lidco.com.au](mailto:techsupport@lidco.com.au)



710 System Specifier Guide, CAD, PDF files and more are available at [www.lidco.com.au](http://www.lidco.com.au)

## WERS Energy Ratings



Glazing	Cooling	Heating	Uw*	SHGC*	Tvw*
6mm Clear	27%	14%	6.1	0.72	0.77
6.38mm ComfortPlus	46%	21%	4.3	0.45	0.51
10mm Clear	31%	15%	6.0	0.66	0.74
10.38mm Laminate	31%	16%	6.0	0.67	0.76
6.38mm Lam / 12mm Air / 6.38mm CP	50%	41%	2.9	0.52	0.45
10.38mm Lam / 12mm Ar / 8.38mm CP	50%	43%	2.7	0.51	0.44

\*Notes: **Uw** is the whole window U-value  
**SHGC** is the whole window solar heat gain coefficient  
**Tvw** is the whole window visible (light) transmittance  
 More energy ratings available at [www.lidco.com.au/energy-ratings](http://www.lidco.com.au/energy-ratings)



Lidco Corporation Pty Ltd  
 T 1300 663 848  
[techsupport@lidco.com.au](mailto:techsupport@lidco.com.au)  
[www.lidco.com.au](http://www.lidco.com.au)

Founded in Australia over 65 years ago Lidco is a leading designer and supplier of contemporary and high performance residential and commercial aluminium window and door systems

© 2013 Lidco Corporation Pty Ltd

Your nearest supplier: