

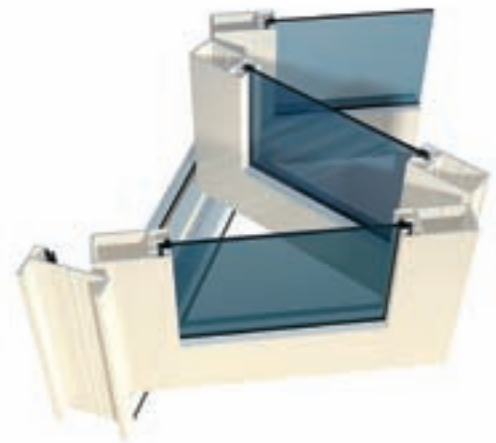


Overview

The Pinnacle™ Bifold Door is a top-hung bifold door ideal for the commercial or architectural residential market. The door panels can be either single or double glazed.

Features

- The doors that make up this system are 44mm thick making for robust panels – door heights of up to 3m are possible
- Single glazing options range from 4mm to 10.38mm
- The double glazed option is designed to accept a 22mm IGU without the need to add unsightly glazing adaptors
- The system incorporates the Brio Wetherfold Coastal 75 bifold stainless steel hardware capable of maximum panel weights of up to 75kg
- The heavy duty track is designed to easily support large panels
- Can incorporate a single panel hinged door allowing daily access without having to completely open the bifold system
- Suitable for in-swing operation with the incorporation of a subsill
- The 100mm frame allows for numerous sidelight options using an extensive range of Lidco's fixed panel framing systems and window systems, including the Klimat Lanai Louvre™
- In areas protected from the weather the sill track can be replaced with a floor guide set into the floor
- Hardware options have been chosen in the context of the special needs of bifold systems – for example, the hinges conveniently incorporate a built-in handle to aid door closure
- Slimline hardware allows for neat stacking of the door panels
- A specially designed flush bolt channel in the head and sill assist with installation and adjustment of the flush bolt positions, eliminating the need to drill unsightly holes in the framing
- The system is available with cast stainless steel flush bolts which include a moulded rod guide to suit the stile



Maximum Panel Height	3000mm
Maximum Panel Width	1000mm
Maximum Glass Thickness	≤22mm IGU



*Standard sill used (with sub-sill rating is 600Pa)

Design Performance	
Serviceability Wind Pressure	1500Pa
Overall Classification	N4



How to Specify

- Aluminium frames to be manufactured using Lidco 744 System: Pinnacle™ Bifold Door
- Perimeter frame to be Lidco 100x50mm framing and door panels to be Lidco 44mm commercial grade sash
- Selected framing to be engineered, manufactured and installed in accordance with: AS 2047-2048 (Windows in Buildings), AS/NZS 1170 (Loading Code), AS/NZS 1664 (Aluminium Structures Code)
- Selected glazing to be in line with performance requirements as set out in AS 1288 (Glass in Buildings)
- Size limitations are governed by design intent, glass selection and local wind load and deflection requirements



For any specification assistance please call to speak to one of our friendly and knowledgeable technical sales team on 1300 663 848 or email techsupport@lidco.com.au



744 System Specifier Guide, CAD, PDF files and more are available at www.lidco.com.au

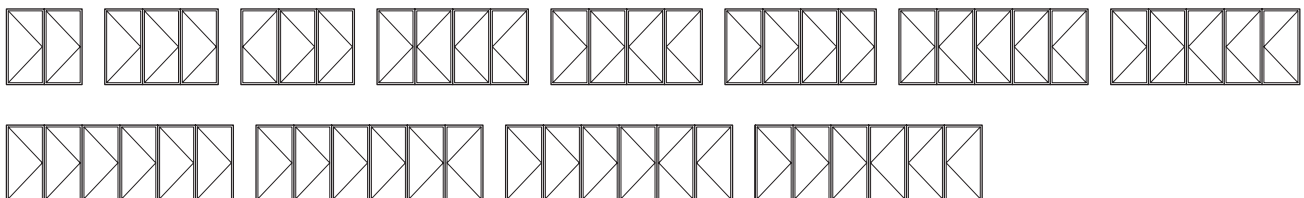
WERS Energy Ratings



Glazing	Cooling	Heating	Uw*	SHGC*	Tvw*	Air Inf.
5mm Clear	28%	16%	6.1	0.58	0.59	0.19
6mm Clear	29%	16%	6.0	0.58	0.59	0.19
6.38mm ComfortPlus Clear	44%	31%	4.6	0.48	0.55	0.19
6mm EG / 7mm Air / 5mm EA	62%	26%	3.9	0.26	0.36	0.19
5mm Clr / 8mm Air / 5mm EA	48%	39%	3.8	0.47	0.49	0.19

*Notes: **Uw** is the whole window U-value, **SHGC** is the whole window solar heat gain coefficient
Tvw is the whole window visible (light) transmittance
 More energy ratings available at www.lidco.com.au/energy-ratings

Typical Configurations



Lidco Corporation Pty Ltd
 T 1300 663 848
techsupport@lidco.com.au
www.lidco.com.au

Founded in Australia over 65 years ago Lidco is a leading designer and supplier of contemporary and high performance residential and commercial aluminium window and door systems

© 2013 Lidco Corporation Pty Ltd

Your nearest supplier: