

COMMERCIAL RANGE 746 SYSTEM

Pinnacle™ Sliding Window



Date: Feb 2013
Replaces: Apr 2012

Not to scale

00-042 – Latch (Metal)

For 112, 422 and
746 Systems



00-043 – Short Cam Lock (Key 92615)

For 422 and
746 Systems



01-027 – Roller (40kg SS Bearings)

For 422 and 746 Systems
Suitable for 400-250
and 400-251



02-014 – 3mm Woolpile



02-015 – 4mm Woolpile



02-019 – Fin Seal 48 T Slot 4.25mm



02-040 – 4mm Q-Lon



02-510 – Sill Baffle



03-239 – Hole Plug (14mm)



03-321 – Anti-lift Block

For 422 and 746 Systems



Up to date stock availability can be viewed at www.lidco.com.au/indices

SALES ORDERS orders@lidco.com.au F 1300 937 713

TECHNICAL SUPPORT techsupport@lidco.com.au T 1300 663 848

Not to scale

04-065 – 6mm Glazing Channel



04-067 – 5mm Glazing Channel



04-209 – 10mm Glazing Channel



04-333 – 18mm Glazing Channel

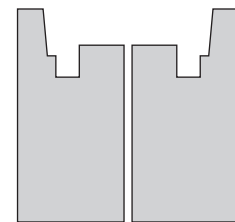


04-545 – 4mm Glazing Channel



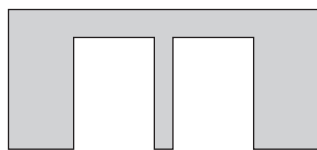
05-506 – Gasket (100mm S/DS Sill)

For 746 System



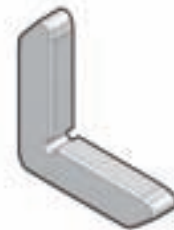
05-507 – Gasket (100mm S/DS Head)

For 746 System



05-673 – Corner Stake

Suitable for 400-673



09-278 – Flexible Handle (black)



Up to date stock availability can be viewed at www.lidco.com.au/indices