

Not to scale

**00-042 – Latch (Metal)**

For 112, 422 and 746 Systems



**00-043 – Short Cam Lock (Key 92615)**

For 422 and 746 Systems



**01-027 – Roller (40kg SS Bearings)**

For 422 and 746 Systems  
Suitable for 400-250 and 400-251



**02-014 – 3mm Woolpile**



**02-015 – 4mm Woolpile**



**02-019 – Fin Seal 48 T Slot 4.25mm**



**02-040 – 4mm Q-Lon**



**02-153 – V Seal (Mullion)**

Suitable for COM-020, COM-041, 700-646, 400-314



**02-510 – Sill Baffle**



**02-511 – Sill Flap**

Suitable for LSS-156, LSS-144, 400-241, LSS-200



Up to date stock availability can be viewed at [www.lidco.com.au/indices](http://www.lidco.com.au/indices)

# DESIGNER RANGE 422 SYSTEM

## Thermaview™ Sliding Window



Date: Aug 2013  
Replaces: Feb 2013

Not to scale

03-239 – Hole Plug (14mm)

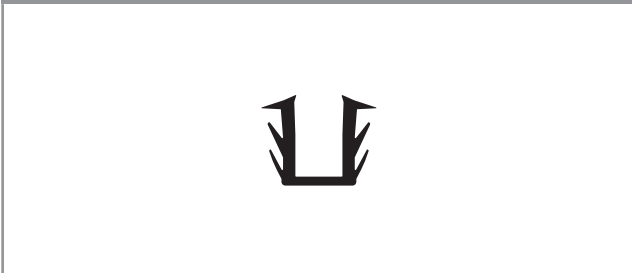


03-321 – Anti-lift Block

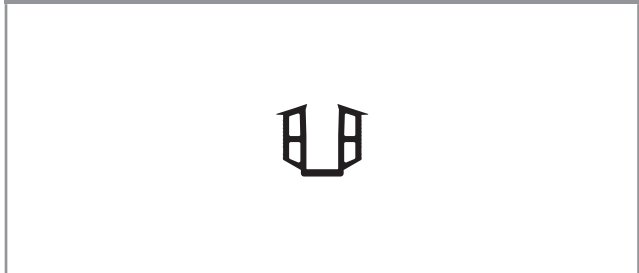
For 422 and 746 Systems



04-065 – 6mm Glazing Channel



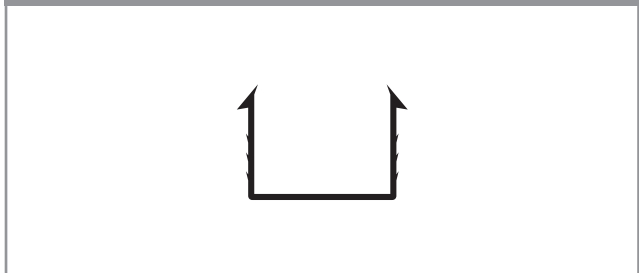
04-067 – 5mm Glazing Channel



04-209 – 10mm Glazing Channel



04-333 – 18mm Glazing Channel

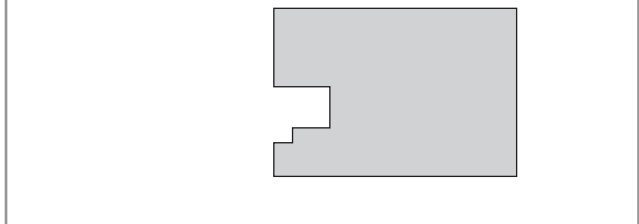


04-545 – 4mm Glazing Channel



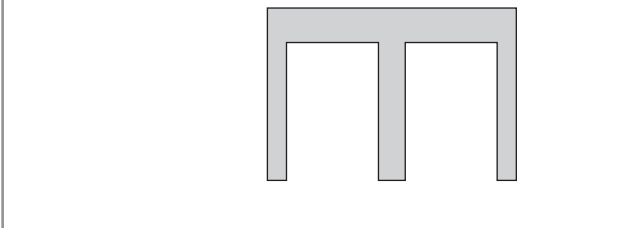
05-500 – Gasket (65mm S/DS Sill)

For 422 System



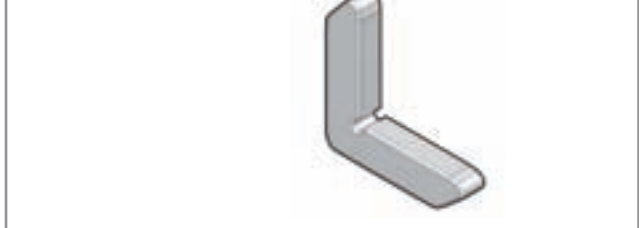
05-501 – Gasket (65mm S/DS Head)

For 422 System



05-673 – Corner Stake

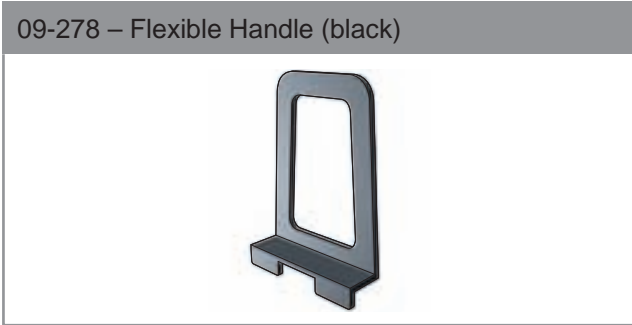
Suitable for 400-673



Up to date stock availability can be viewed at [www.lidco.com.au/indices](http://www.lidco.com.au/indices)

Not to scale

09-278 – Flexible Handle (black)



Up to date stock availability can be viewed at [www.lidco.com.au/indices](http://www.lidco.com.au/indices)