

Not to scale

02-045 – Q-Lon QEZ 4.8mm Slot



02-056 – Seal (Aquamac)



02-082 – Bulb Seal



02-231 – V Seal



02-552 – Spline – 6mm



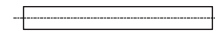
04-116 – Glazing Wedge



04-516 – Glazing Channel – Top Clip Loose

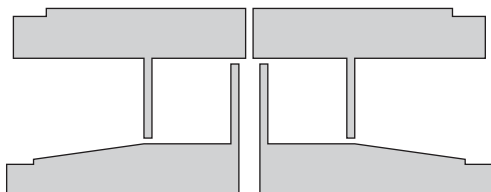


05-078 – Roll Split Pin



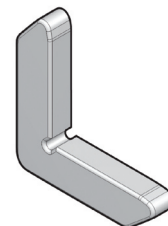
05-528 – Gasket (Louvre Head and Sill)

For 610 System



05-673 – Corner Stake

Suitable for 400-673



Up to date stock availability can be viewed at www.lidco.com.au/indices

ADJUSTABLE LOUVRE FRAME 610 SYSTEM

Full Size Sections



Date: Nov 2012

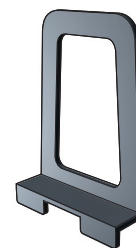
Replaces: Aug 2012

Not to scale

09-271 – Turn Button Long (Black)



09-278 – Flexible Handle (black)



20-155 – 14mm Timber Blade (900mm)



20-156 – 14mm Timber Blade (1200mm)



Up to date stock availability can be viewed at www.lidco.com.au/indices

SALES ORDERS orders@lidco.com.au F 1300 937 713

TECHNICAL SUPPORT techsupport@lidco.com.au T 1300 663 848

KLIMAT™ ADJUSTABLE LOUVRES – 610 SYSTEM – HARDWARE SUMMARY			
Item No	Description	Colour	Material
02-045	Q-Lon QEZ 4.8mm Slot	black	
02-056	Seal (Aquamac)	black	
02-082	Bulb Seal	black	PVC
02-231	V Seal	black	PVC
02-552	Spline – 6mm		
04-116	Glazing Wedge	black	PVC
04-516	Glazing Channel – Top Clip Loose	black	PVC
05-078	Roll Split Pin		
05-528	Gasket (Louvre Head and Sill)		foam
05-673	Corner Stake	black	plastic
09-271	Turn Button Long	black	plastic
09-278	Flexible Handle	black	plastic
20-155	14mm Timber Blade (900mm)		cedar
20-156	14mm Timber Blade (1200mm)		cedar

Up to date stock availability can be viewed at www.lidco.com.au/indices