



Overview

Lidco offers a range of sub-heads and sub-sills to suit framing sizes of 65mm, 100mm, 120mm, 125mm, 150mm, 200mm and 250mm.

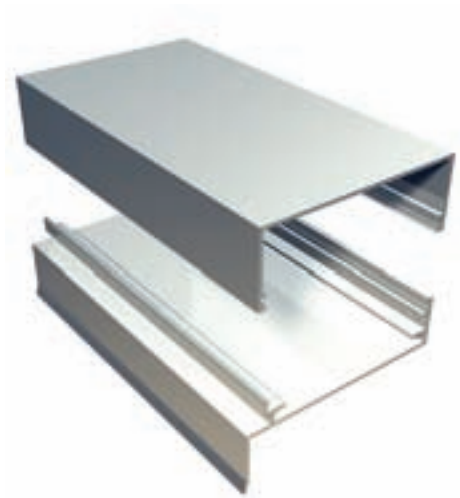
Sub-framing sections (sub-heads, sub-sill and sub-jamb) are used to simplify installation, improve weather performance and control air infiltration. In particular, sub-heads should be used where there is likely to be vertical movement due to slab deflections or settlement and, when used with sub-sills, to simplify installation.

Commercial framing is designed generally to direct water through and underneath the frame. It is not designed to be watertight and the use of slotted sub-sills is key to drainage control.

Sub-Sill End Caps

It is critical that the sub-sills be slotted and an end cap used on sub-sills. Failure to do this will most likely result in water spilling over the ends of the sub-sill and runs underneath the walls.

Available in various powdercoat and anodised finishes.





Your nearest supplier:



With over 65 years experience in the architectural building industry, Lidco is one of Australia's market leaders in the development, commercialisation and distribution of architectural framing systems.

HEAD OFFICE
LIDCO • 171 William Street, Darlinghurst NSW 2010 Australia
T 1300 663 848 www.lidco.com.au

