



COMMERCIAL RANGE 718 SYSTEM

Emporia™ Face Glazed – 125mm

Specifier Guide

The Lidco Specifier's Guide contains technical information, maximum permissible sizes, typical configurations, energy ratings and key design features and benefits.





COMMERCIAL RANGE 718 SYSTEM

Emporia™ Face Glazed 125mm Commercial Framing

Overview

The Emporia™ 125mm frame face glazed system is one of our most cost effective framing systems. It has been specifically designed to be used in areas where there are large floor to ceiling framing requirements and the 100mm frame is deemed too light and the 150mm frame too big and expensive. Ideally suited for shopping centres, offices, show rooms, and commercial buildings, it is also increasingly popular in architectural housing and apartments.

Glass can be fitted to the frame using external captive and internal roll-in glazing wedges or roll-in wedges on both sides. The use of an external captive glazing wedge and an internal roll-in wedge allows glazing to be undertaken on the inside and resists vandalism in ground floor applications.

There are a number of hinged doors available and they can also be set up as sliding doors, either as top hung sliding or bottom rolling track mounted.

There are a number of awning/casement windows that can be incorporated into this frame and the sash options include flat and bevelled faces.



Features

- Single glazing options range from 5mm to 10.38mm
- A wide choice of transoms for fabricators to choose from
- Awning/casement window options utilising the Thermaview™ (413 System), DuoTherm™ (373 System) and 900 Series sashes
- Lidco's Emporia™ Commercial Doors (716 System and 717 System) can be incorporated into the framing system both in hinged and sliding configurations. As sliding doors they can either be top hung (in order to provide as level transition through the entrance as possible) or bottom rolling track mounted.
- The following Lidco awning/casement sashes can be incorporated into the 125mm frame:
 - DuoTherm™ awning flush sash from the 373 System
 - Thermaview™ awning overlap sash from the 413 System (flat face and beveled sashes available)
- Sub-sill and sub-head options are available to aid on site installation
- Thermal expansion is controlled by use of split mullions
- Alternative 100mm and 150mm face glazed frames (single and double glazed) are available – see 715 System
- A panelised window wall system is available on a per project basis. It features captive glazed mullions and transoms and expansion stack joints or structurally glazed mullions

Maximum Glass Thickness	≤10.38mm IGU
-------------------------	--------------



How to Specify

- Aluminium frames to be manufactured using Lidco 718 System: Emporia™ Face Glazed Commercial Framing
- Selected framing to be engineered, manufactured and installed in accordance with:
 - AS 2047-2048 (Windows in Buildings)
 - AS/NZS 1170 (Loading Code)
 - AS/NZS 1664 (Aluminium Structures Code)
- Selected glazing to be in line with performance requirements as set out in AS 1288 (Glass in Buildings)
- Size limitations are governed by design intent, glass selection and local wind load and deflection requirements



For any specification assistance please call to speak to one of our friendly and knowledgeable technical sales team on 1300 663 848 or email techsupport@lidco.com.au



718 System Specifier Guide, CAD, PDF files and more are available at www.lidco.com.au

WERS Energy Ratings



Glazing	Cooling	Heating	Uw*	SHGC*	Tvw*	Air Inf.
6mm Clear	26%	15%	6.4	0.72	0.76	0.36
6.38mm ComfortPlus	51%	24%	4.6	0.45	0.50	0.36
10.38mm Laminate	38%	12%	6.2	0.67	0.75	0.36
6mm Clear / 12mm Air / 6mm Clear	37%	40%	3.9	0.61	0.67	0.36
6.38mm Lam / 12mm Air / 6.38mm CP	45%	46%	3.3	0.53	0.45	0.36
6.38mm Lam / 12mm Ar / 6.38mm CP	46%	48%	3.1	0.53	0.45	0.36

*Notes: **Uw** is the whole window U-value
SHGC is the whole window solar heat gain coefficient
Tvw is the whole window visible (light) transmittance
 More energy ratings available at www.lidco.com.au/energy-ratings



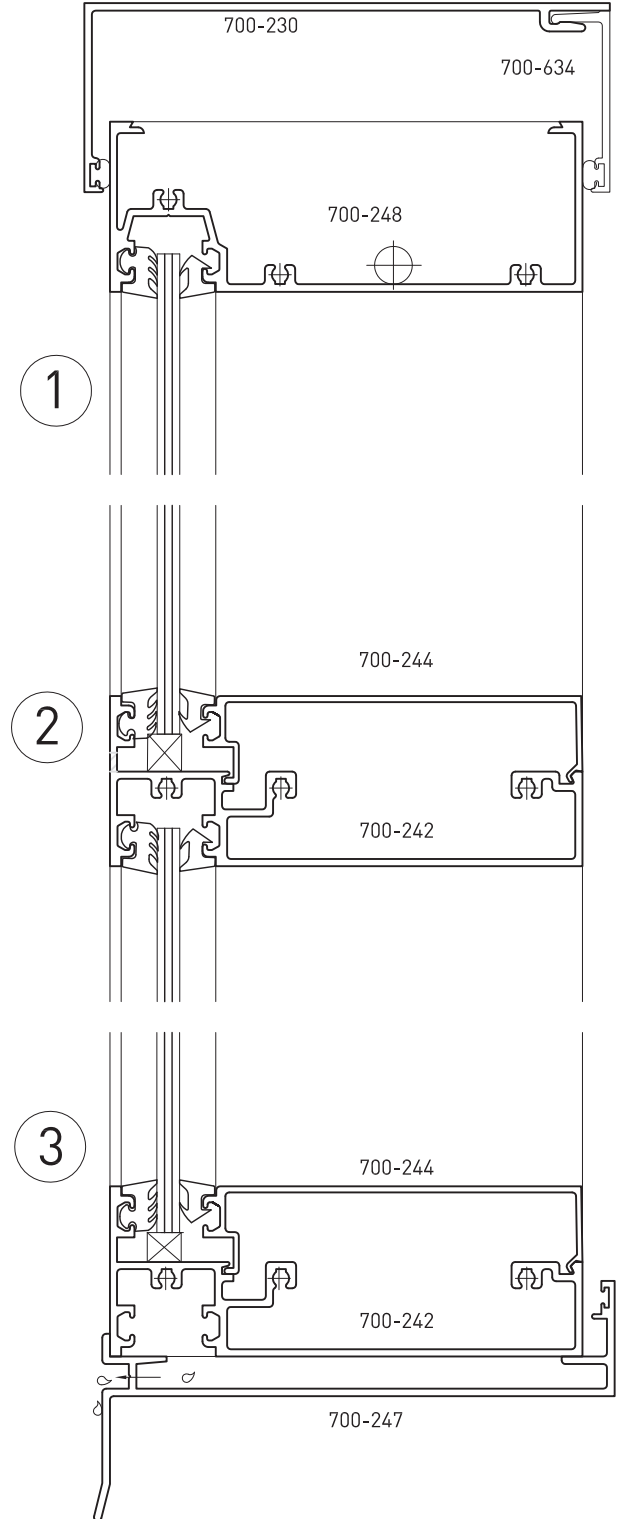
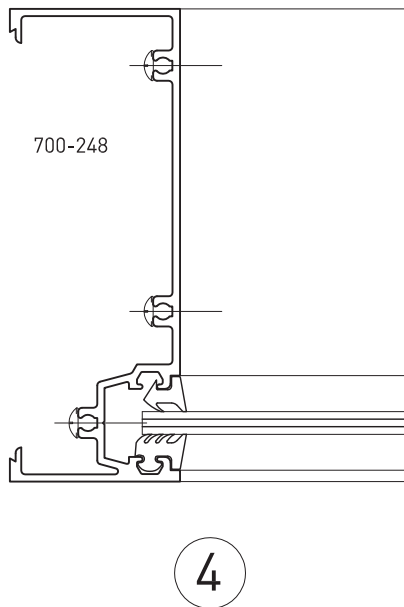
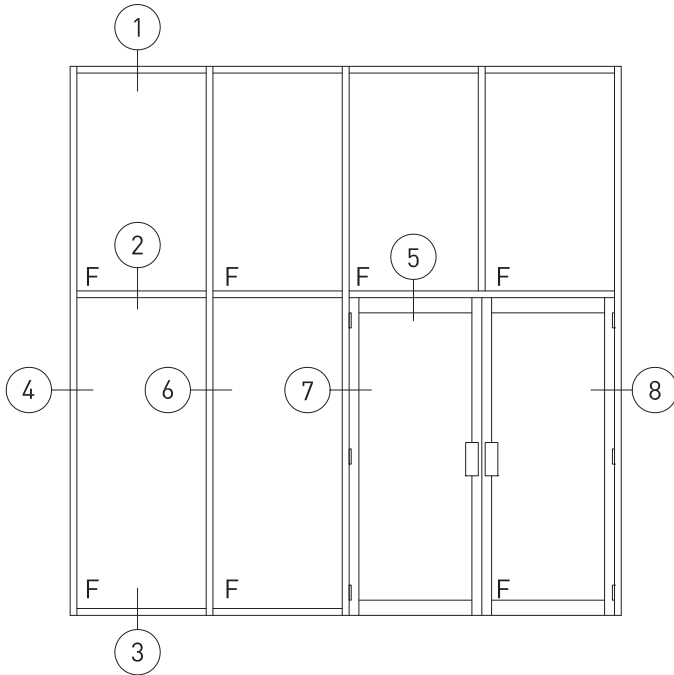
Lidco Corporation Pty Ltd
 T 1300 663 848
techsupport@lidco.com.au
www.lidco.com.au

Founded in Australia over 65 years ago Lidco is a leading designer and supplier of contemporary and high performance residential and commercial aluminium window and door systems

© 2013 Lidco Corporation Pty Ltd

Your nearest supplier:

Typical Configurations



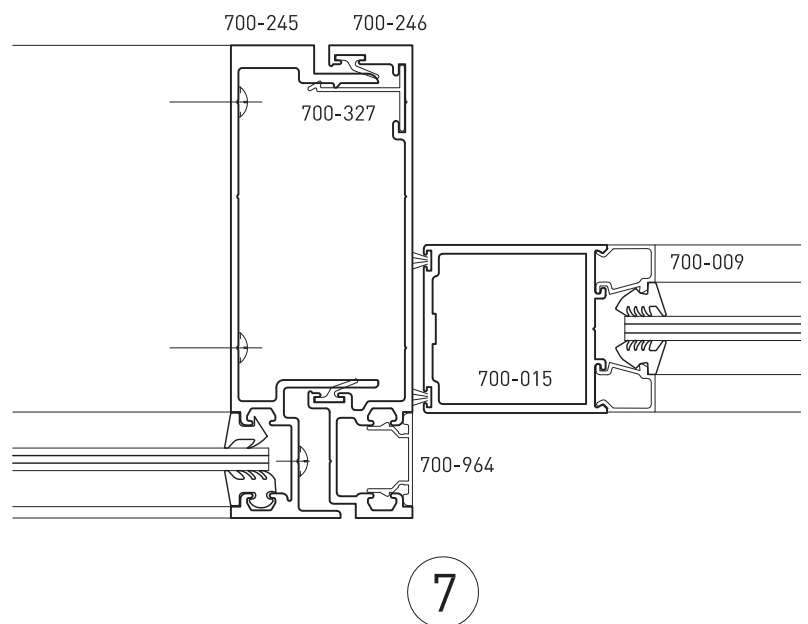
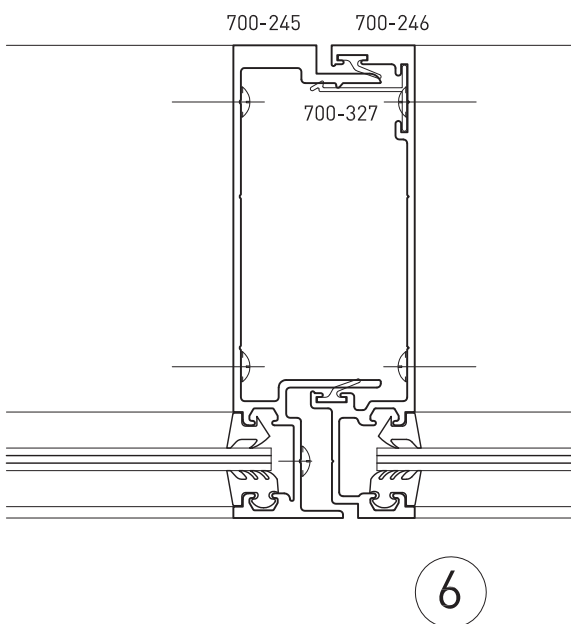
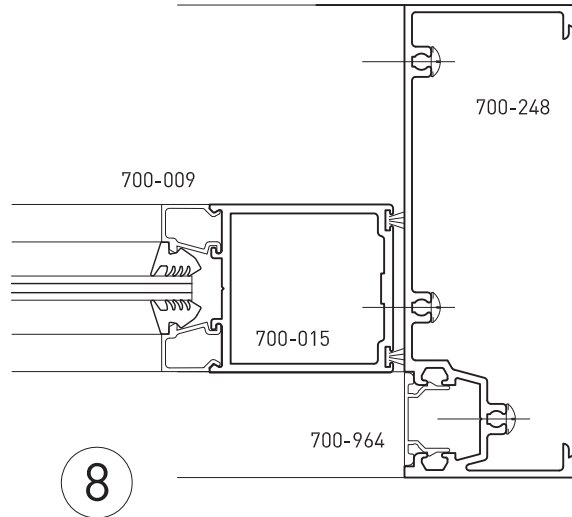
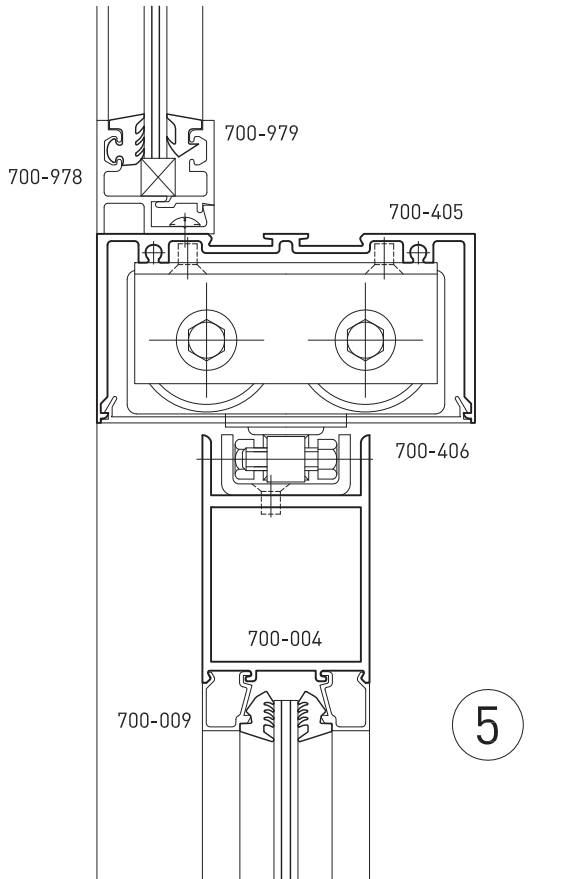
COMMERCIAL RANGE 718 SYSTEM

Emporia™ 125mm Face Glazed

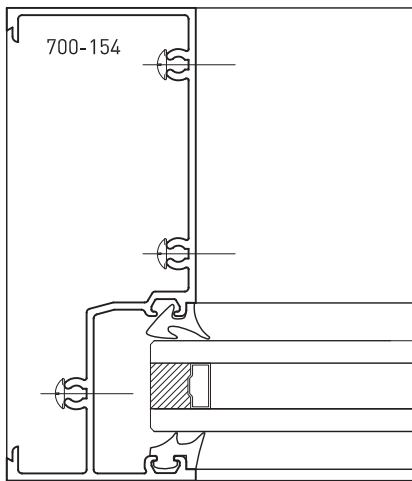
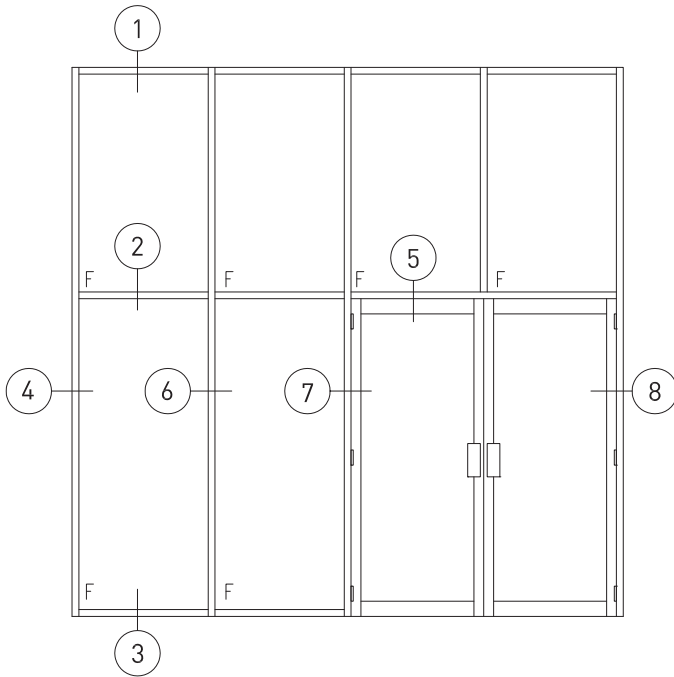


Date: Jan 2013
Replaces: Dec 2012

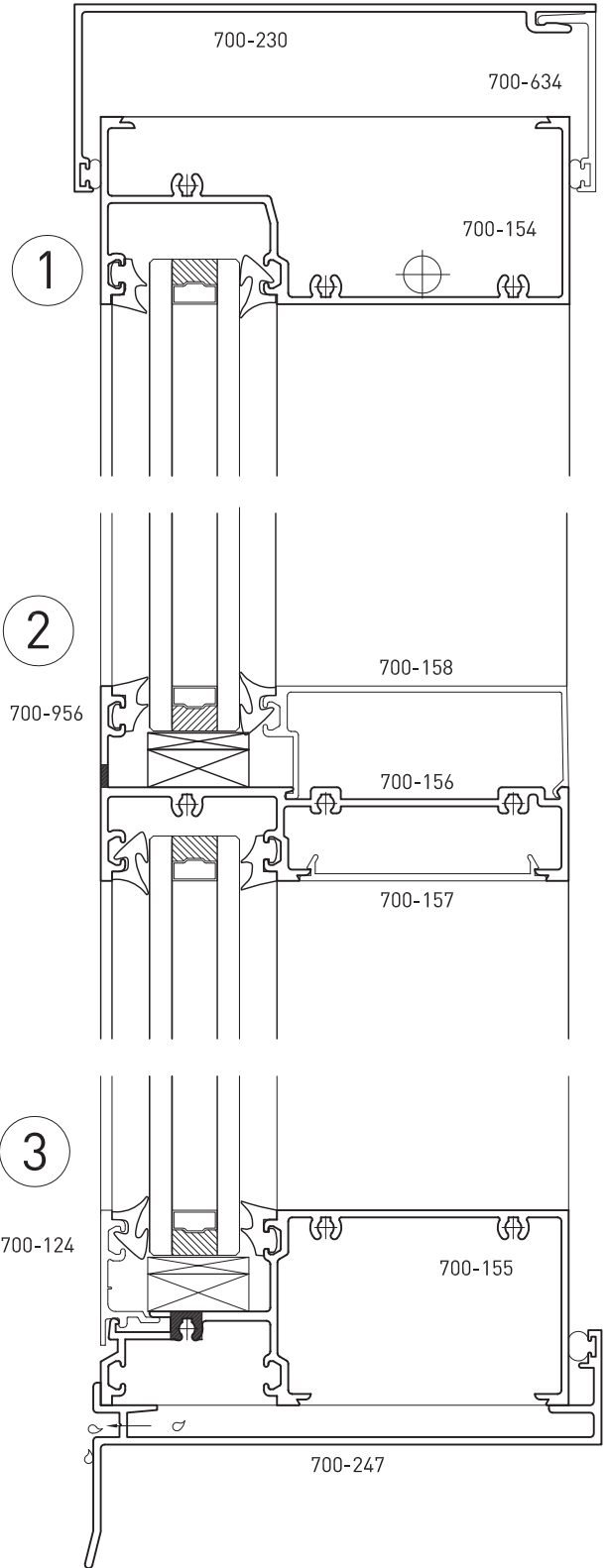
Typical Configurations



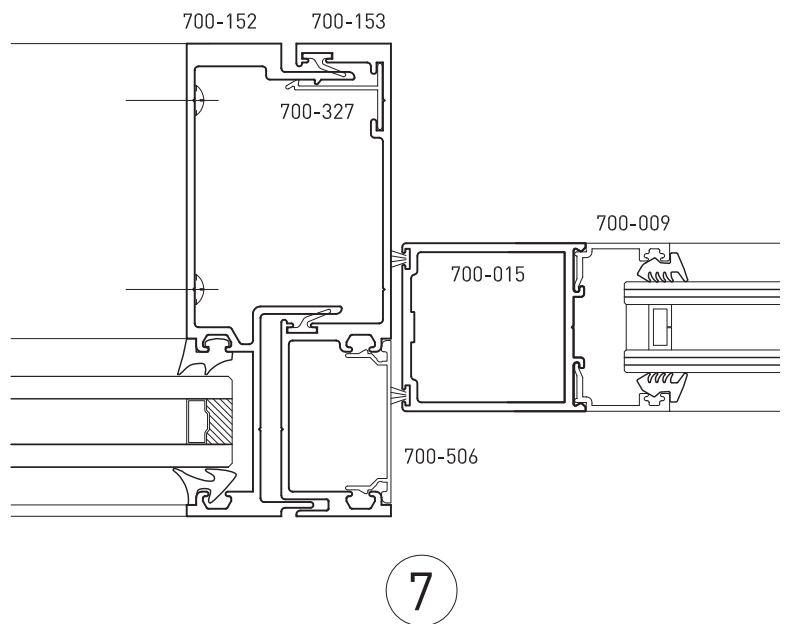
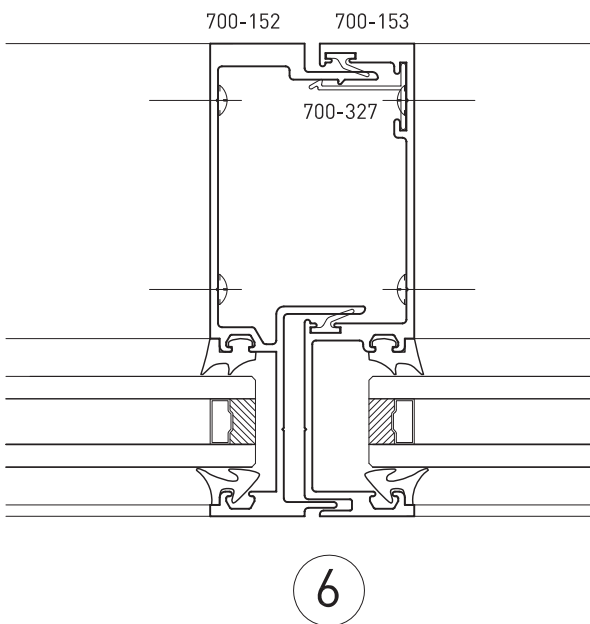
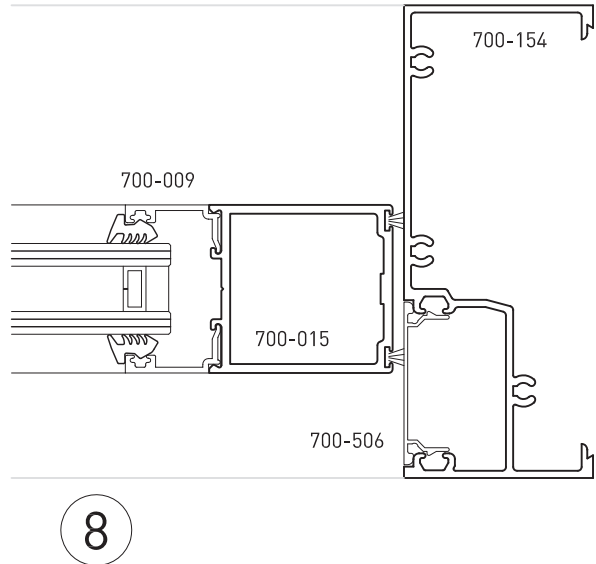
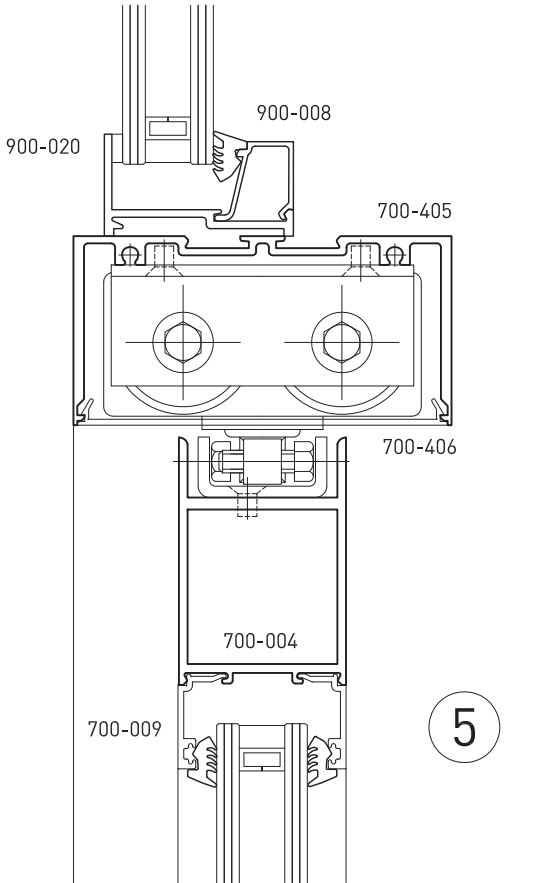
Typical Configurations

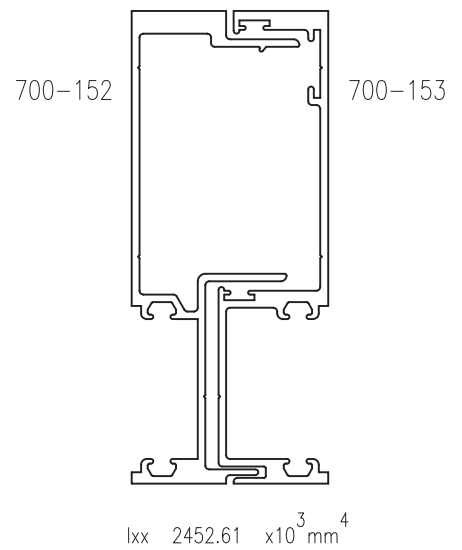
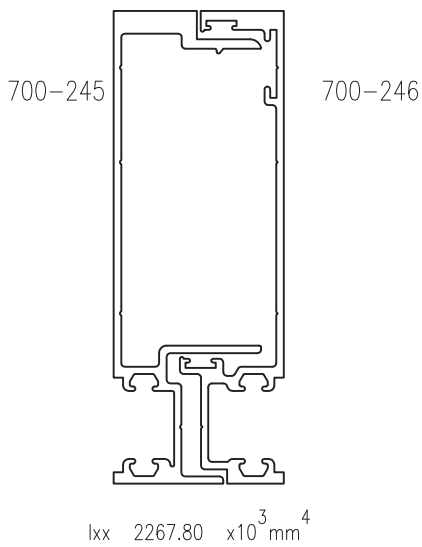
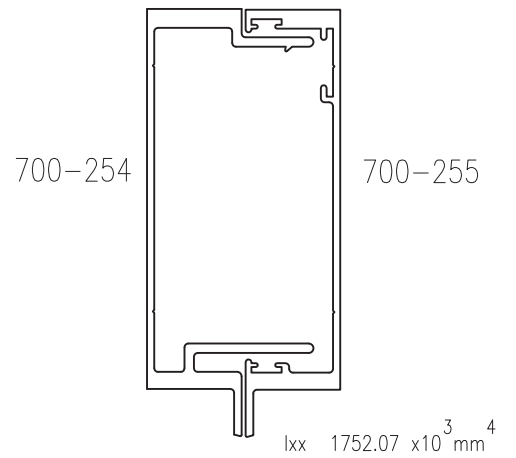
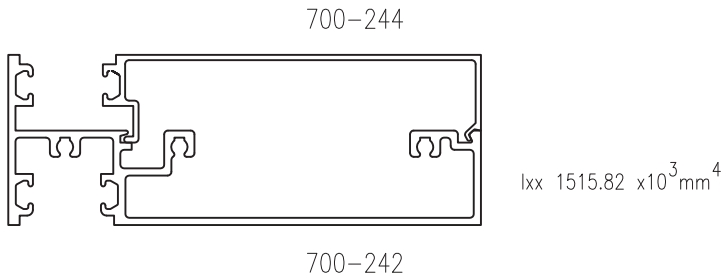
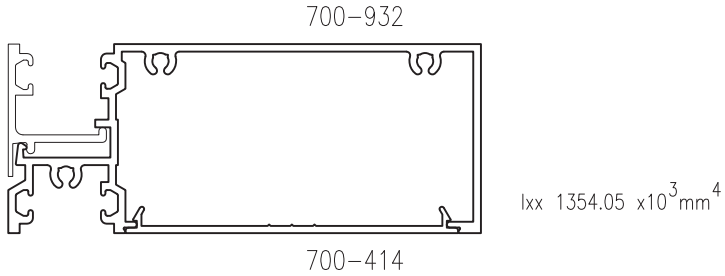


4



Typical Configurations





Test Results

718 EMPORIA face glazed 4 panel fixed light – 10.38mm Lam

Serviceability load	N/A
Ultimate load	N/A
Water penetration	400 Pa
Air infiltration @75Pa	+ 0.27 l/s/m ² - 0.25 l/s/m ²
Operating force (initiating)	N/A
Operating force (maintaining)	N/A
Test sample size	1.985m high x 2.34m wide
Test report number	NSW 759-901352

718 EMPORIA fix light with sub-sill – 10mm clear float

Serviceability load	+/-3.5 kPa
Ultimate load	+/-3.5 kPa
Water penetration	600 Pa
Air infiltration @75Pa	+ 0.05 l/s/m ² - 0.13 l/s/m ²
Operating force (initiating)	N/A
Operating force (maintaining)	N/A
Test sample size	2.5m high x 3.034m wide
Test report number	AS09-065